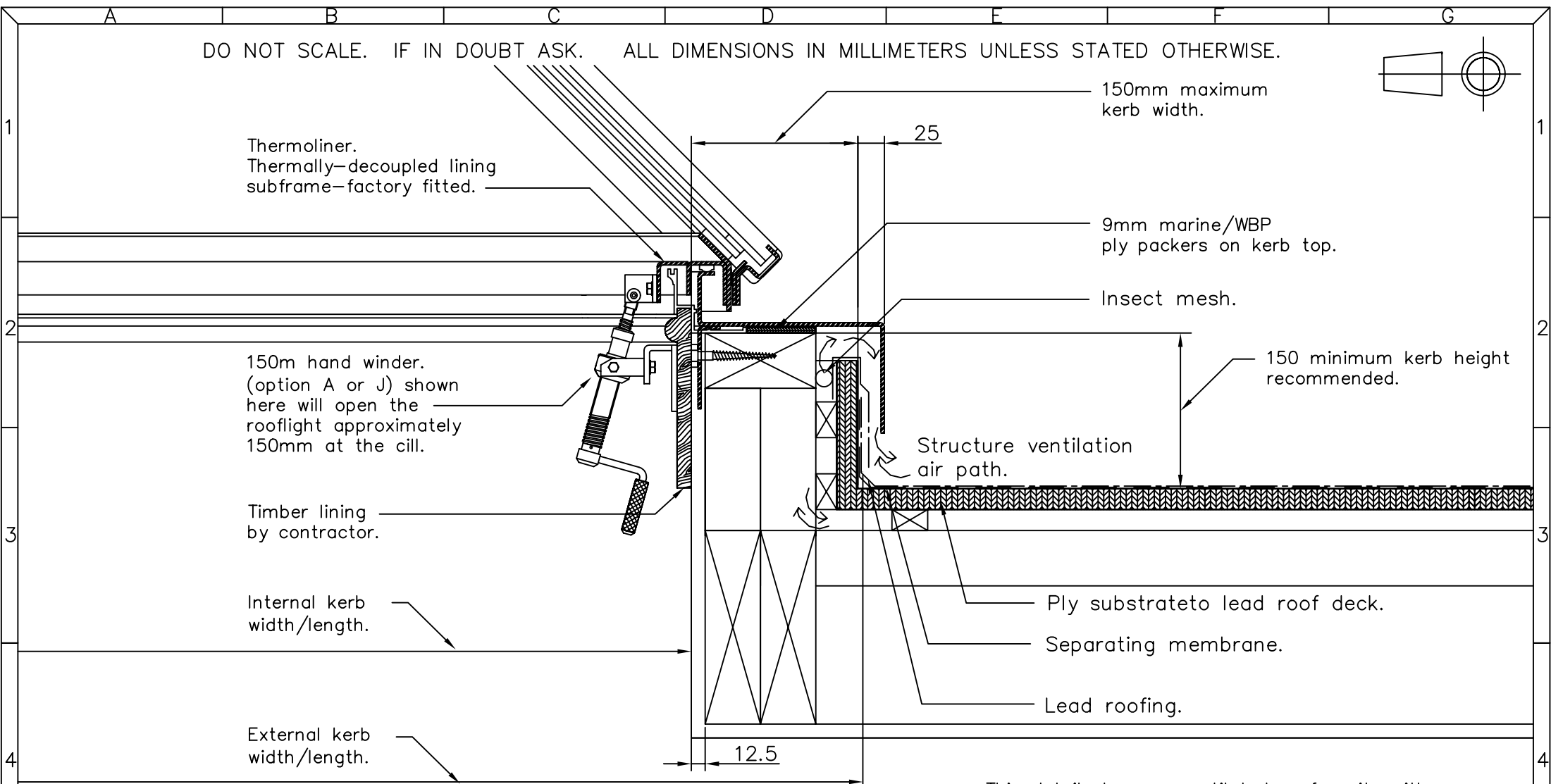
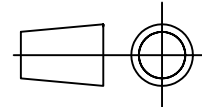


DO NOT SCALE. IF IN DOUBT ASK. ALL DIMENSIONS IN MILLIMETERS UNLESS STATED OTHERWISE.



This detail shows a ventilated roof cavity with a lead/sheet covering over.

Revision B. Zone D2. Fixing bracket added. 23/10/01. IM.

The Metal Window Company Limited
 Unit 8, Wychwood Busines Centre
 Milton Road
 Shipton-Under-Wychwood
 Oxon OX7 6XU

Telephone: 01993-830-613
 Fax: 01993-831-066
 Email: info@metalwindow.co.uk

Note.

This is not a constructional proposal. It is a suggestion of one possible roof kerb detail. Designers/ contractors should devise kerb details appropriate to the circumstances.

Drawing Ref/No. 11056-01

Title. KERB DETAIL FOR
 PYR/LTN/POL ROOFLIGHTS

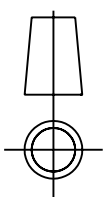
Scale. N.T.S Date:23/10/01

Drawn By:IM

Checked By:IM Revision No. B

The information contained within this drawing is Copyright & Design right of THE METAL WINDOW COMPANY LIMITED.

DO NOT SCALE. IF IN DOUBT ASK. ALL DIMENSIONS IN MILLIMETERS UNLESS STATED OTHERWISE.



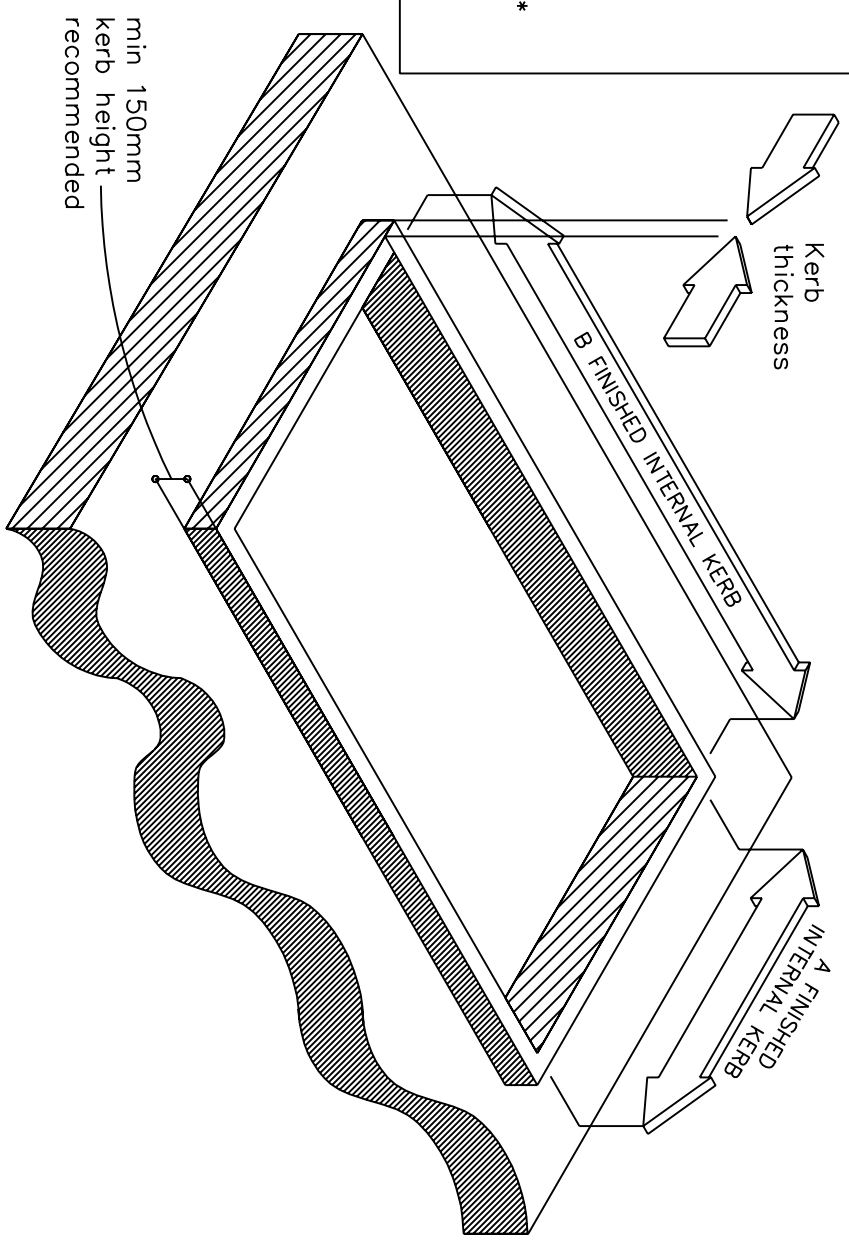
A Finished Internal kerb = 1st part of model ref.
e.g LT600x900 = 600mm

B Finished Internal kerb = 2nd part of model ref.
e.g LT600x900 = 900mm

Kerb thickness = 150mm MAX

Kerb height = 150mm MIN

DIMENSIONS REFER TO FINISHED INTERNAL KERB - *NOT STRUCTURAL*
PLEASE VIEW IN CONJUNCTION WITH DRAWING 11056-01.



The Metal Window Company Limited
Unit 8, Wychwood Business Centre
Milton Road
Shipton—Under—Wychwood
Oxon OX7 6XU

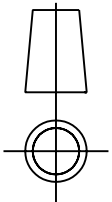
Telephone: 01993-830-613
Fax: 01993-831-066
Email: info@metalwindow.co.uk

The information contained within this drawing is Copyright & Design right of THE METAL WINDOW COMPANY LIMITED.

Note:
This is not a constructional proposal. It is a suggestion of one possible roof kerb detail. Designers/ contractors should devise kerb details appropriate to the circumstances.

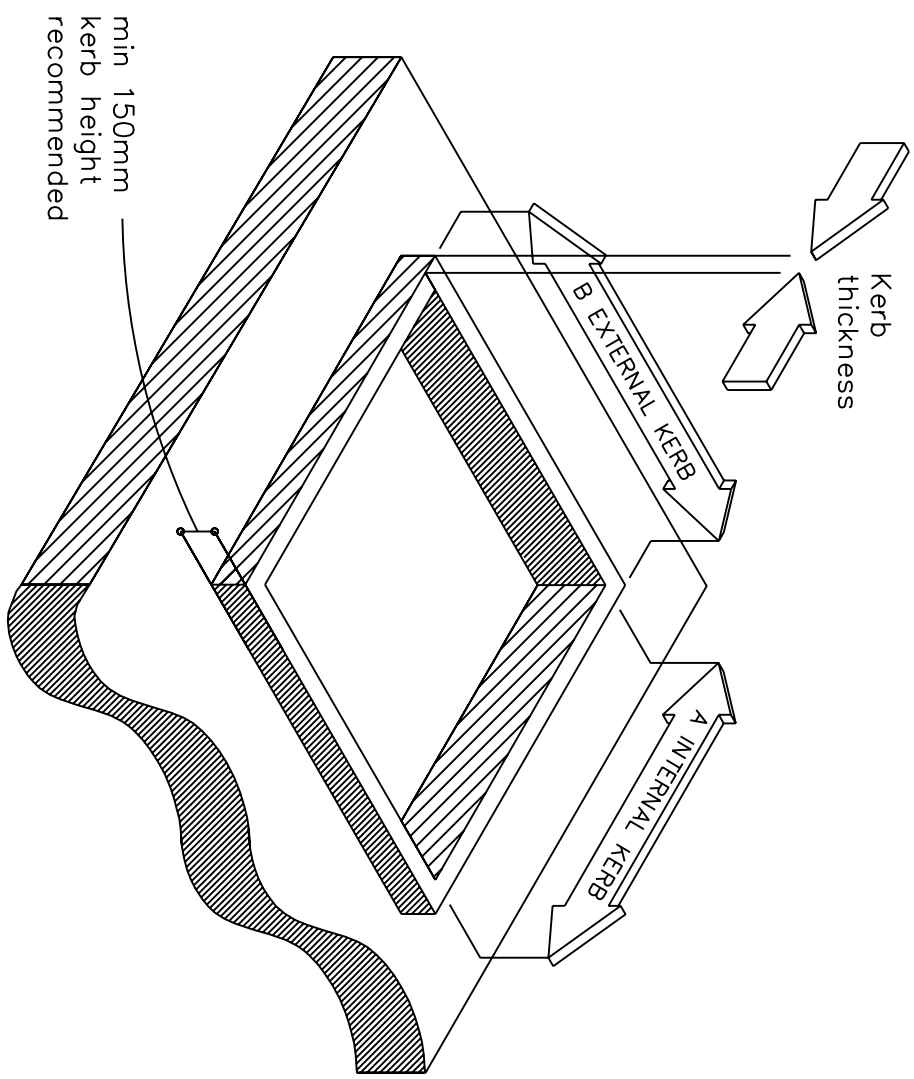
Drawing Ref/No. 11213-06	
Title. FRAMING PLAN	
Scale. N.T.S	Date: 16/01/02
Drawn By: IM	Revision No.
Checked By: IM	

DO NOT SCALE. IF IN DOUBT ASK. ALL DIMENSIONS IN MILLIMETERS UNLESS STATED OTHERWISE.



1
Kerb detail for
Plateau Rooflight models
PL600 and PL600A.
See drawing number
11063-01 for
detailed section through
the Kerb

2
A Internal kerb = 600
B External kerb = 900
Kerb thickness = 150 max



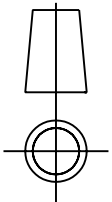
4
The Metal Window Company Limited Telephone: 01993-830-613
Unit 8, Wychwood Business Centre Fax: 01993-831-066
Milton Road Email: info@metalwindow.co.uk
5 Shipton-Under-Wychwood
Oxon OX7 6XU

The information contained within this drawing is Copyright
& Design right of THE METAL WINDOW COMPANY LIMITED.

Note:
This is not a constructional
proposal. It is a suggestion of
one possible roof kerb detail.
Designers/ contractors should
devise kerb details appropriate
to the circumstances.

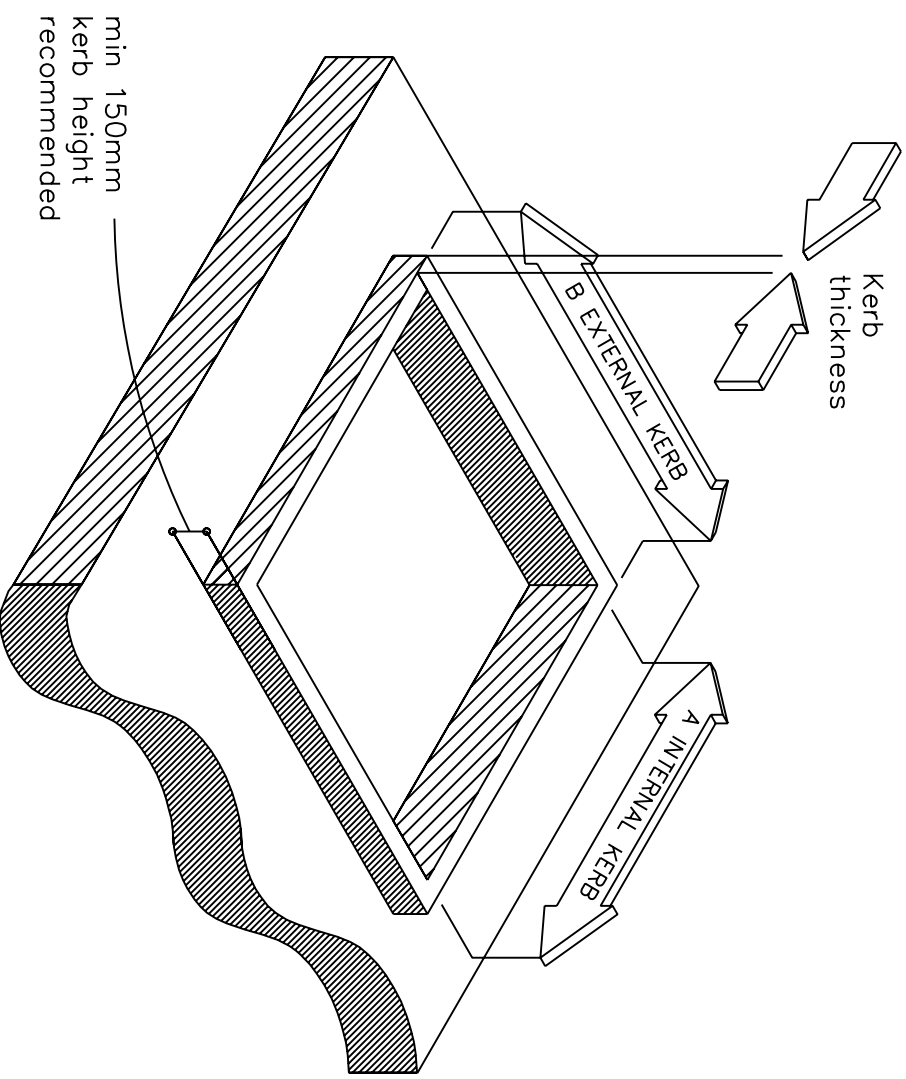
Drawing Ref/No. 11009-61
Title: KERB DIMENSIONS FOR PL600, PL600A
Scale: N.T.S Date:07/09/01
Drawn By:JM
Checked By:JM Revision No.

DO NOT SCALE. IF IN DOUBT ASK. ALL DIMENSIONS IN MILLIMETERS UNLESS STATED OTHERWISE.



1
Kerb detail for
Plateau Rooflight models
PL900 and PL900A.
See drawing number
11063-01 for
detailed section through
the Kerb

2
A Internal kerb = 900
B External kerb = 1200
Kerb thickness = 150 max



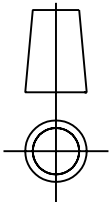
4
The Metal Window Company Limited Telephone: 01993-830-613
Unit 8, Wychwood Business Centre Fax: 01993-831-066
Milton Road Email: info@metalwindow.co.uk
5 Shipton-Under-Wychwood
Oxon OX7 6XU

The information contained within this drawing is Copyright
& Design right of THE METAL WINDOW COMPANY LIMITED.

Note:
This is not a constructional
proposal. It is a suggestion of
one possible roof kerb detail.
Designers/ contractors should
devise kerb details appropriate
to the circumstances.

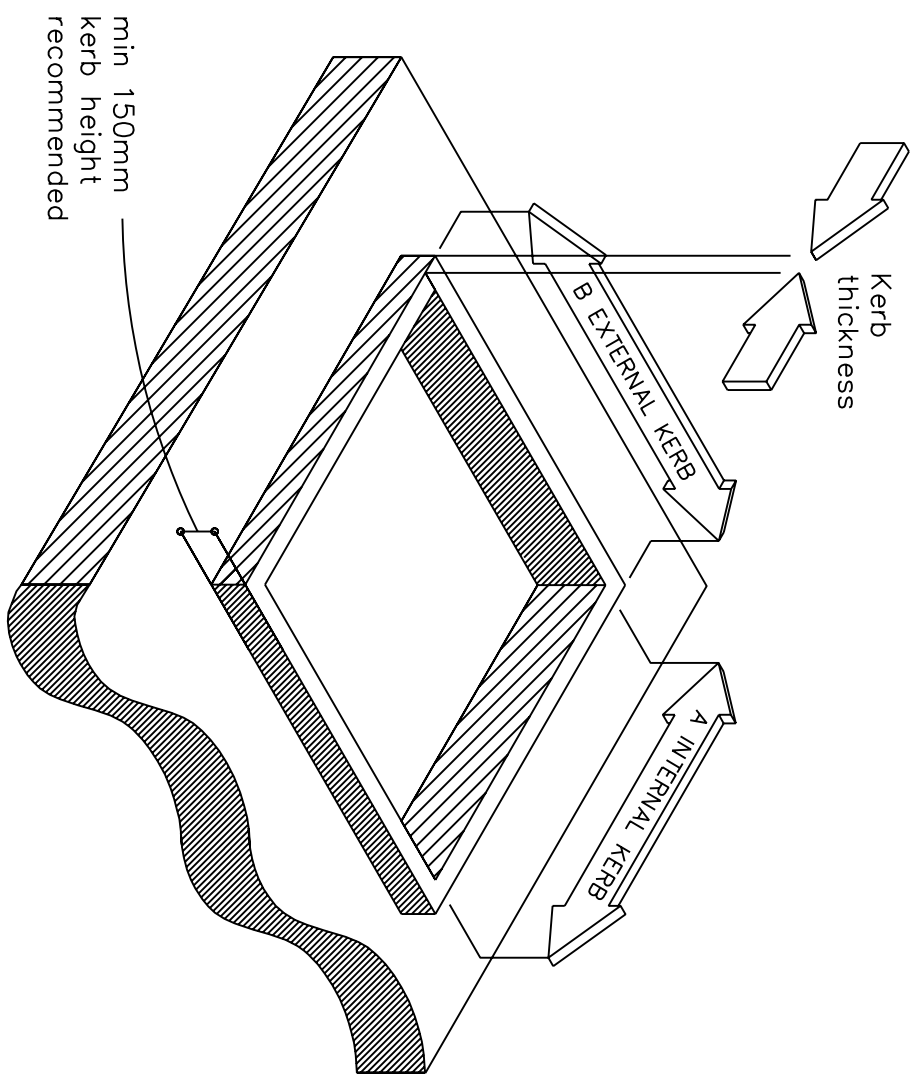
Drawing Ref/No. 11009-63
Title: KERB DIMENSIONS FOR PL900, PL900A
Scale: N.T.S Date:14/09/01
Drawn By:JM
Checked By:JM Revision No.

DO NOT SCALE. IF IN DOUBT ASK. ALL DIMENSIONS IN MILLIMETERS UNLESS STATED OTHERWISE.



1
Kerb detail for
Plateau Rooflight model
PL1200.
See drawing number
11063-01 for
detailed section through
the Kerb

2
A Internal kerb = 1200
B External kerb = 1500
Kerb thickness = 150 max



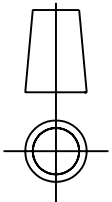
4
The Metal Window Company Limited Telephone: 01993-830-613
Unit 8, Wychwood Business Centre Fax: 01993-831-066
Milton Road Email: info@metalwindow.co.uk
5 Shipton-Under-Wychwood
Oxon OX7 6XU

The information contained within this drawing is Copyright
& Design right of THE METAL WINDOW COMPANY LIMITED.

Note:
This is not a constructional
proposal. It is a suggestion of
one possible roof kerb detail.
Designers/ contractors should
devise kerb details appropriate
to the circumstances.

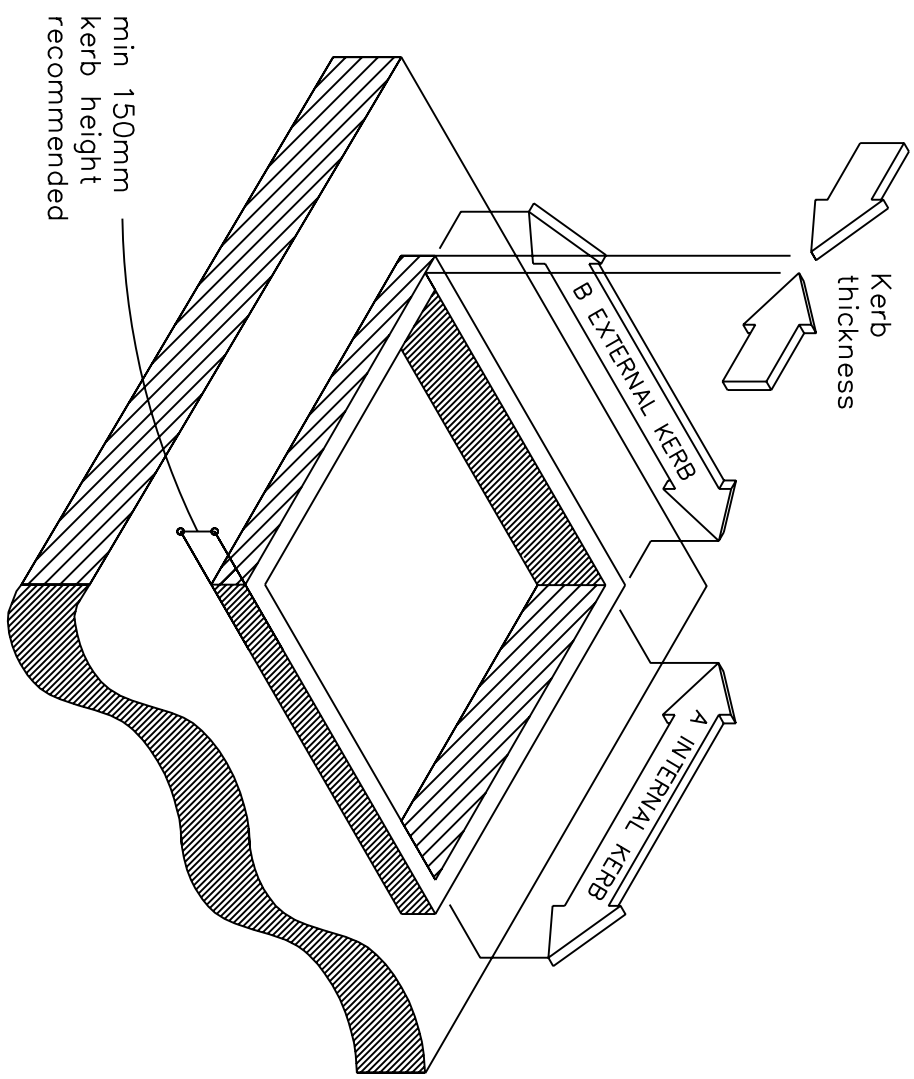
Drawing Ref/No. 11009-86
Title: KERB DIMENSIONS FOR PL1200
Scale: N.T.S Date:12/11/01
Drawn By:JM
Checked By:JM Revision No.

DO NOT SCALE. IF IN DOUBT ASK. ALL DIMENSIONS IN MILLIMETERS UNLESS STATED OTHERWISE.



1
Kerb detail for
Plateau/Pyramid Rooflight model
PL1500/PY1500.
See drawing number
11063-01 or 11056-01 for
detailed section through
the Kerb

2
A Internal kerb = 1500
B External kerb = 1800
Kerb thickness = 150 max



4
The Metal Window Company Limited Telephone: 01993-830-613
Unit 8, Wychwood Business Centre Fax: 01993-831-066
Milton Road Email: info@metalwindow.co.uk
5 Shipton-Under-Wychwood
Oxon OX7 6XU

The information contained within this drawing is Copyright
& Design right of THE METAL WINDOW COMPANY LIMITED.

Note:
This is not a constructional
proposal. It is a suggestion of
one possible roof kerb detail.
Designers/ contractors should
devise kerb details appropriate
to the circumstances.

Drawing Ref/No. 11009-115
Title: KERB DIMENSIONS FOR PL1500/PY1500
Scale: N.T.S Date:01-03-02
Drawn By:PD
Checked By:PD
Revision No.