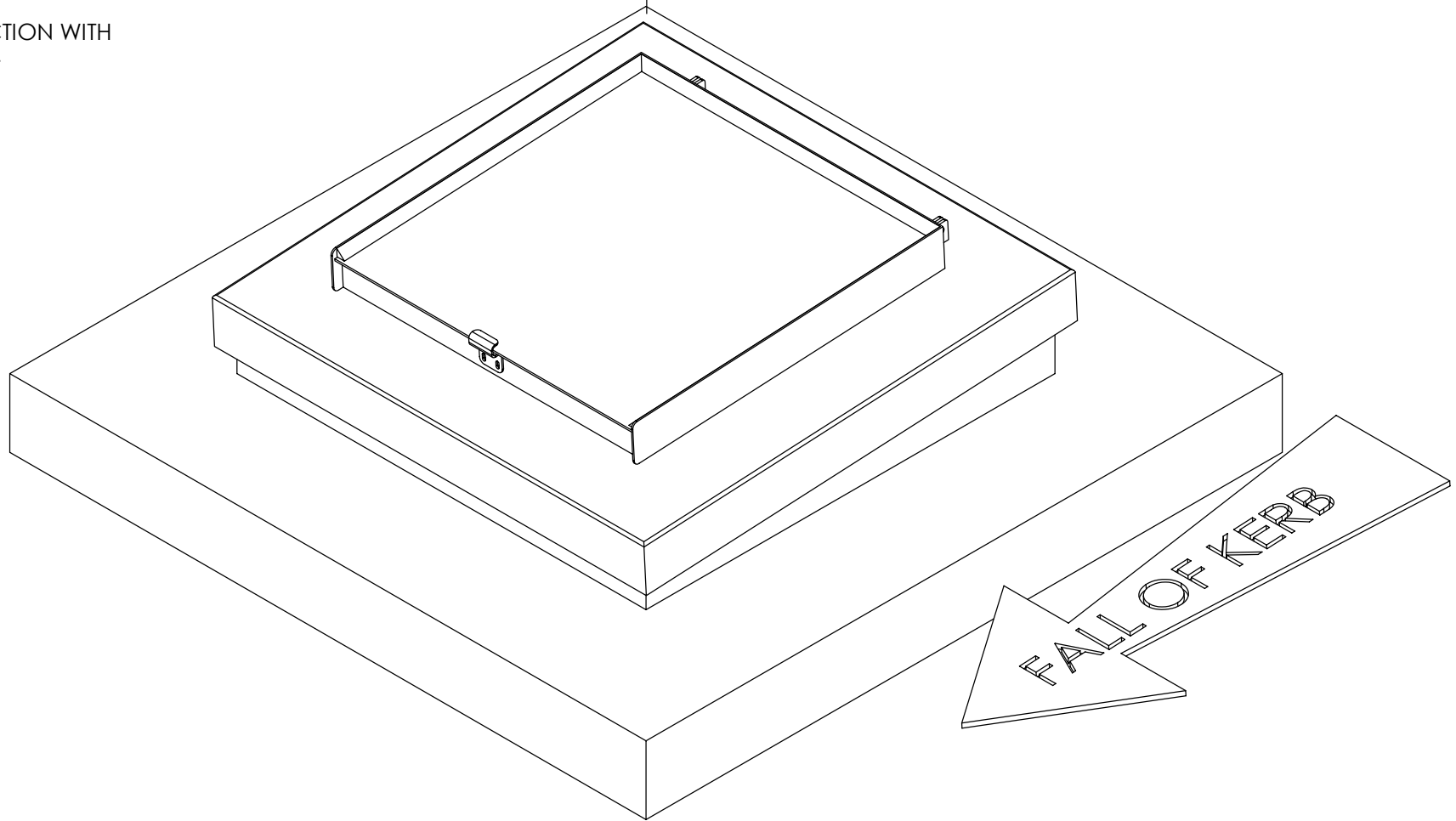


VIEW IN CONJUNCTION WITH  
DWG. 11063-01 (F).



We recommend that the Kerb slopes 1 – 5 degrees away from where the hinges of the Plateau will be (allowing water to run off the casement). However, it is important that the kerb is level across the fall of the kerb. If this is not the case, then 'binding' can occur.

'Binding' is when the casement and the baseplate catch on one another when the Rooflight is opened. Test the opening and closing of the Rooflight. If it 'binds' then corrective adjustments with shims and packers will be necessary.

To test that the kerb is level across the slope, open and close the casement section whilst carefully hammering shims home on the lower support member until the Rooflight operates without binding. Then pack between the Rooflight baseplate and lower support member continuously with ply strip of appropriate thickness and remove shims.

DO NOT SCALE DRAWING

REVISION



DRAWN BY:

TM

CHECKED BY:

PD

DATE:

23-11-04

TITLE:

Plateau Rooflight

ANTI-POOLING DETAILS

MATERIAL:

DWG NO.

**SW11063-05**

A4

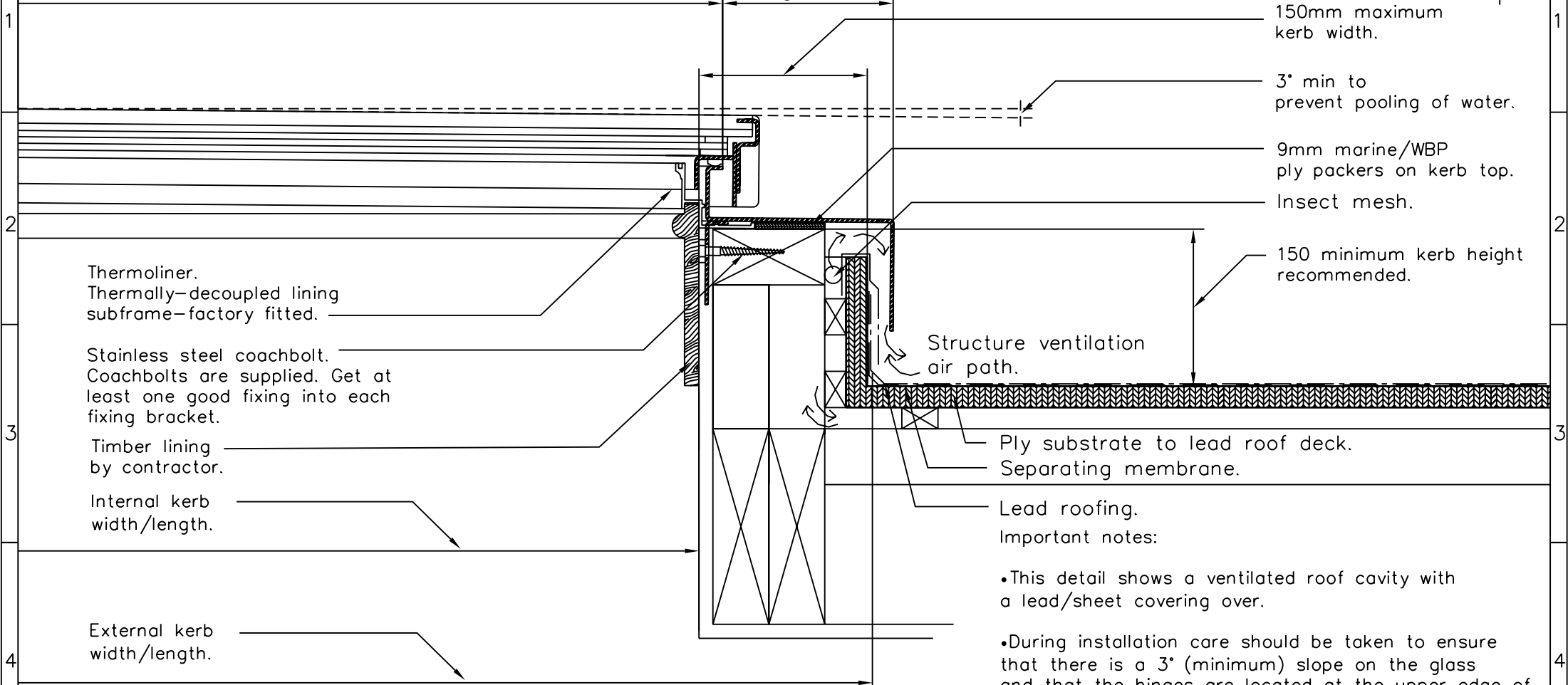
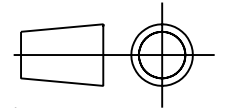
WEIGHT:

SCALE:1:1

SHEET 1 OF 1

DO NOT SCALE. IF IN DOUBT ASK. ALL DIMENSIONS IN MILLIMETERS UNLESS STATED OTHERWISE.

Co-Ordinating width/length.



150mm maximum kerb width.  
 3° min to prevent pooling of water.  
 9mm marine/WBP ply packers on kerb top.  
 Insect mesh.  
 150 minimum kerb height recommended.

Thermoliner.  
 Thermally-decoupled lining subframe-factory fitted.

Stainless steel coachbolt.  
 Coachbolts are supplied. Get at least one good fixing into each fixing bracket.

Timber lining by contractor.

Internal kerb width/length.

External kerb width/length.

Structure ventilation air path.

Ply substrate to lead roof deck.  
 Separating membrane.

Lead roofing.

Important notes:

- This detail shows a ventilated roof cavity with a lead/sheet covering over.
- During installation care should be taken to ensure that there is a 3° (minimum) slope on the glass and that the hinges are located at the upper edge of the slope. This will allow water to run off the roof and prevent the build up of water on the glass surface.

VIEW IN CONJUNCTION WITH DWG. 11063-05.  
 Revision F - Hinge posts relocated to upper edge, 17/05/04 PD

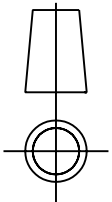
The Metal Window Company Limited Telephone: 01993-830-613  
 Unit 8, Wychwood Busines Centre Fax: 01993-831-066  
 Milton Road Email: info@metalwindow.co.uk  
 Shipton-Under-Wychwood  
 Oxon OX7 6XU

The information contained within this drawing is Copyright & Design right of THE METAL WINDOW COMPANY LIMITED.

Note.  
 This is not a constructional proposal. It is a suggestion of one possible roof kerb detail. Designers/ contractors should devise kerb details appropriate to the circumstances.

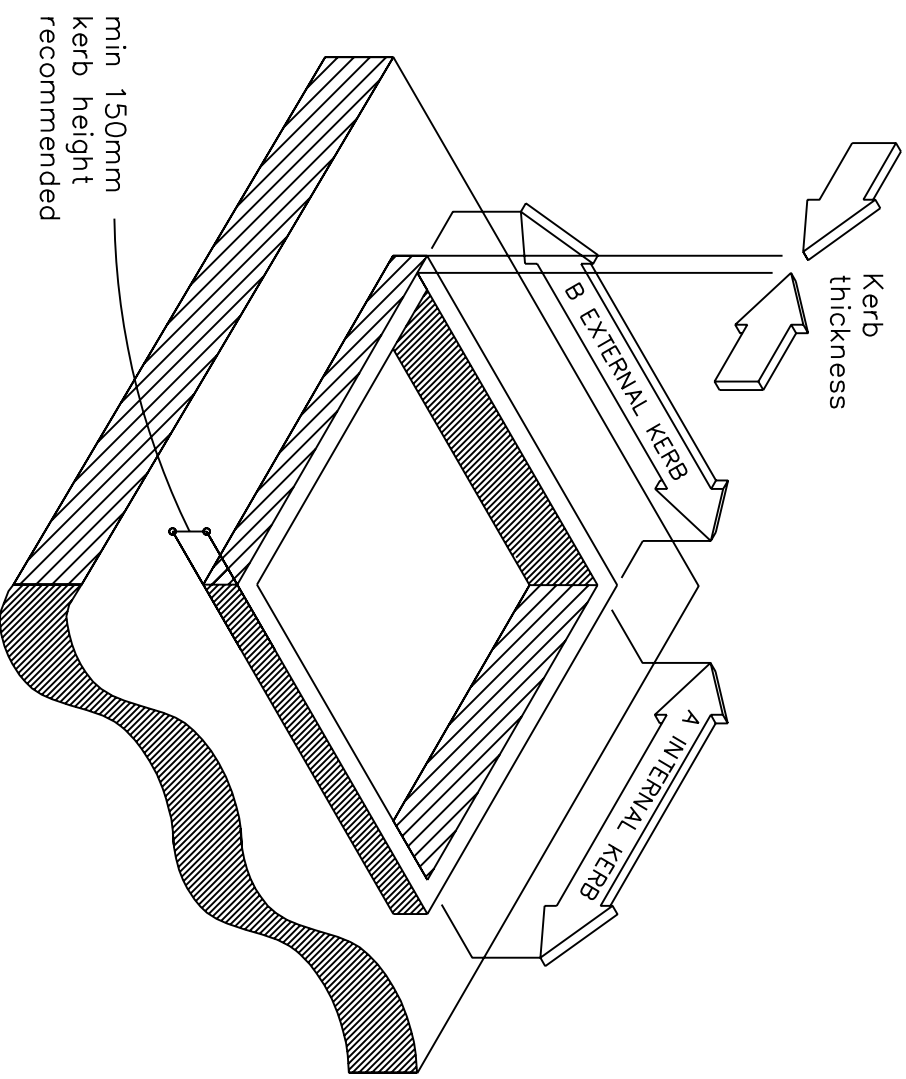
Drawing Ref/No. 11063-01	
Title. KERB DETAIL FOR PLATEAU ROOFLIGHTS	
Scale. N.T.S	Date:29/04/02
Drawn By:IM	
Checked By:IM	Revision No. F

DO NOT SCALE. IF IN DOUBT ASK. ALL DIMENSIONS IN MILLIMETERS UNLESS STATED OTHERWISE.



1  
Kerb detail for  
Plateau Rooflight models  
PL600 and PL600A.  
See drawing number  
11063-01 for  
detailed section through  
the Kerb

2  
A Internal kerb = 600  
B External kerb = 900  
Kerb thickness = 150 max



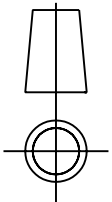
4  
The Metal Window Company Limited Telephone: 01993-830-613  
Unit 8, Wychwood Business Centre Fax: 01993-831-066  
Milton Road Email: info@metalwindow.co.uk  
5 Shipton-Under-Wychwood  
Oxon OX7 6XU

The information contained within this drawing is Copyright  
& Design right of THE METAL WINDOW COMPANY LIMITED.

Note:  
This is not a constructional  
proposal. It is a suggestion of  
one possible roof kerb detail.  
Designers/ contractors should  
devise kerb details appropriate  
to the circumstances.

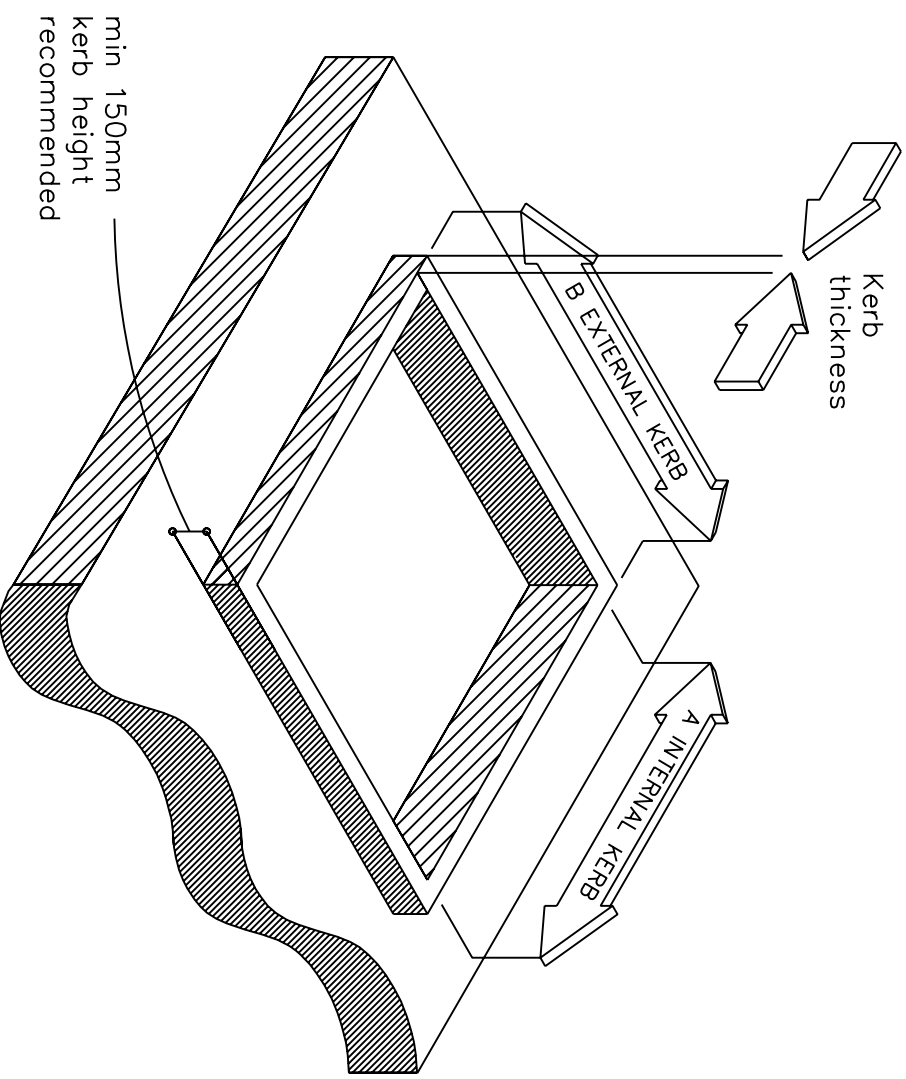
Drawing Ref/No. 11009-61
Title: KERB DIMENSIONS FOR PL600, PL600A
Scale: N.T.S Date:07/09/01
Drawn By:JM
Checked By:JM Revision No.

DO NOT SCALE. IF IN DOUBT ASK. ALL DIMENSIONS IN MILLIMETERS UNLESS STATED OTHERWISE.



1  
Kerb detail for  
Plateau Rooflight models  
PL900 and PL900A.  
See drawing number  
11063-01 for  
detailed section through  
the Kerb

2  
A Internal kerb = 900  
B External kerb = 1200  
Kerb thickness = 150 max



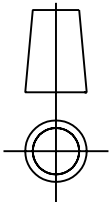
4  
The Metal Window Company Limited Telephone: 01993-830-613  
Unit 8, Wychwood Business Centre Fax: 01993-831-066  
Milton Road Email: info@metalwindow.co.uk  
5 Shipton-Under-Wychwood  
Oxon OX7 6XU

The information contained within this drawing is Copyright  
& Design right of THE METAL WINDOW COMPANY LIMITED.

Note:  
This is not a constructional  
proposal. It is a suggestion of  
one possible roof kerb detail.  
Designers/ contractors should  
devise kerb details appropriate  
to the circumstances.

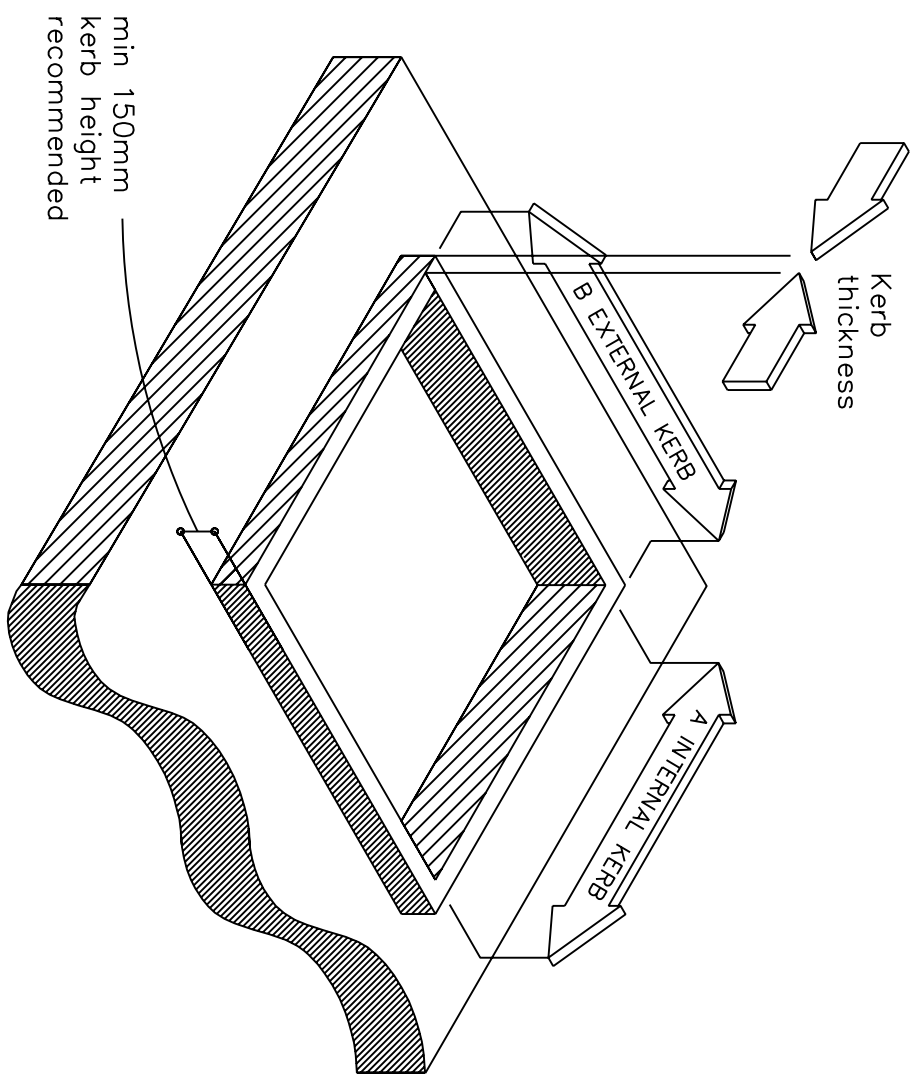
Drawing Ref/No. 11009-63
Title: KERB DIMENSIONS FOR PL900, PL900A
Scale: N.T.S Date:14/09/01
Drawn By:JM
Checked By:JM Revision No.

DO NOT SCALE. IF IN DOUBT ASK. ALL DIMENSIONS IN MILLIMETERS UNLESS STATED OTHERWISE.



1  
Kerb detail for  
Plateau Rooflight model  
PL1200.  
See drawing number  
11063-01 for  
detailed section through  
the Kerb

2  
A Internal kerb = 1200  
B External kerb = 1500  
Kerb thickness = 150 max



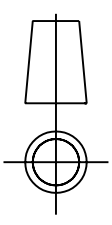
4  
The Metal Window Company Limited Telephone: 01993-830-613  
Unit 8, Wychwood Business Centre Fax: 01993-831-066  
Milton Road Email: info@metalwindow.co.uk  
5 Shipton-Under-Wychwood  
Oxon OX7 6XU

The information contained within this drawing is Copyright  
& Design right of THE METAL WINDOW COMPANY LIMITED.

Note:  
This is not a constructional  
proposal. It is a suggestion of  
one possible roof kerb detail.  
Designers/ contractors should  
devise kerb details appropriate  
to the circumstances.

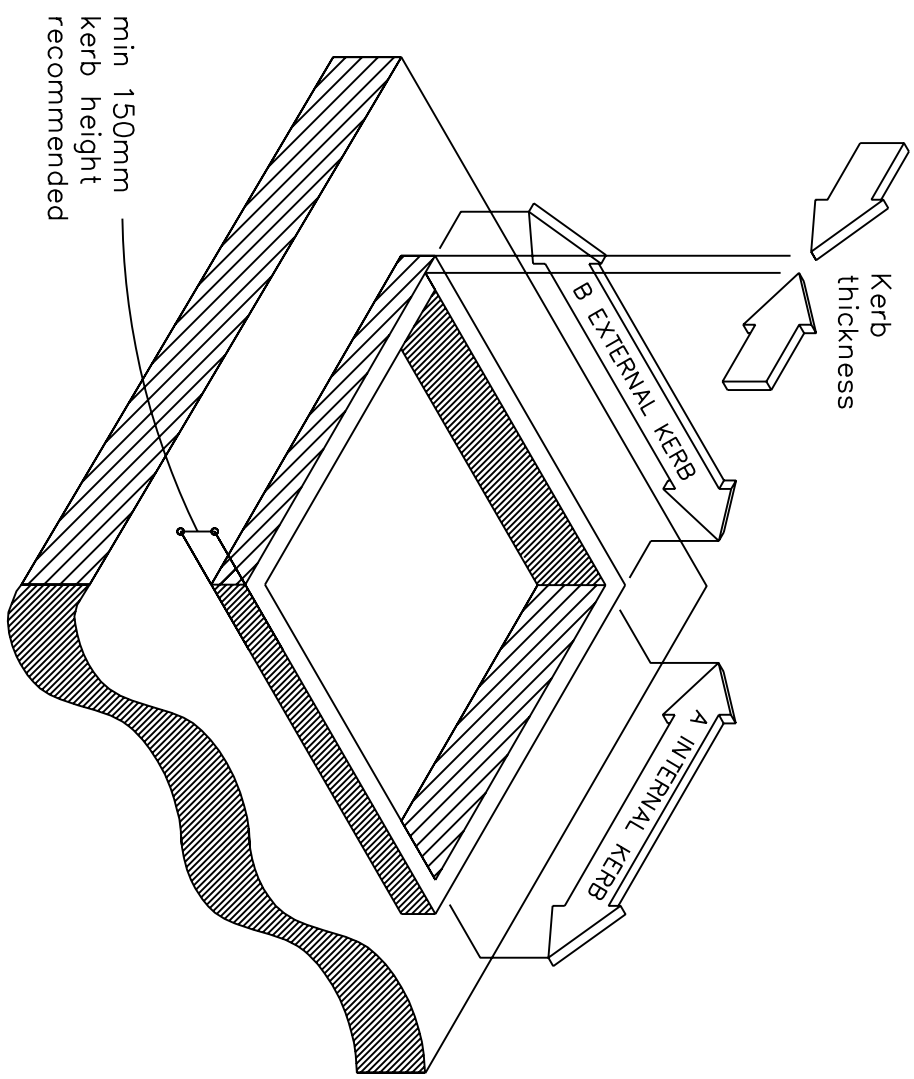
Drawing Ref/No. 11009-86
Title: KERB DIMENSIONS FOR PL1200
Scale: N.T.S Date:12/11/01
Drawn By:JM
Checked By:JM Revision No.

DO NOT SCALE. IF IN DOUBT ASK. ALL DIMENSIONS IN MILLIMETERS UNLESS STATED OTHERWISE.



1  
Kerb detail for  
Plateau/Pyramid Rooflight model  
PL1500/PY1500.  
See drawing number  
11063-01 or 11056-01 for  
detailed section through  
the Kerb

- 2  
A Internal kerb = 1500  
B External kerb = 1800  
Kerb thickness = 150 max



4  
The Metal Window Company Limited  
Unit 8, Wychwood Business Centre  
Milton Road  
Shipton-Under-Wychwood  
Oxon OX7 6XU  
Telephone: 01993-830-613  
Fax: 01993-831-066  
Email: info@metalwindow.co.uk

5  
The information contained within this drawing is Copyright  
& Design right of THE METAL WINDOW COMPANY LIMITED.

Note:  
This is not a constructional  
proposal. It is a suggestion of  
one possible roof kerb detail.  
Designers/ contractors should  
devise kerb details appropriate  
to the circumstances.

Drawing Ref/No. 11009-115
Title: KERB DIMENSIONS FOR PL1500/PY1500
Scale: N.T.S Date:01-03-02
Drawn By:PD
Checked By:PD
Revision No.