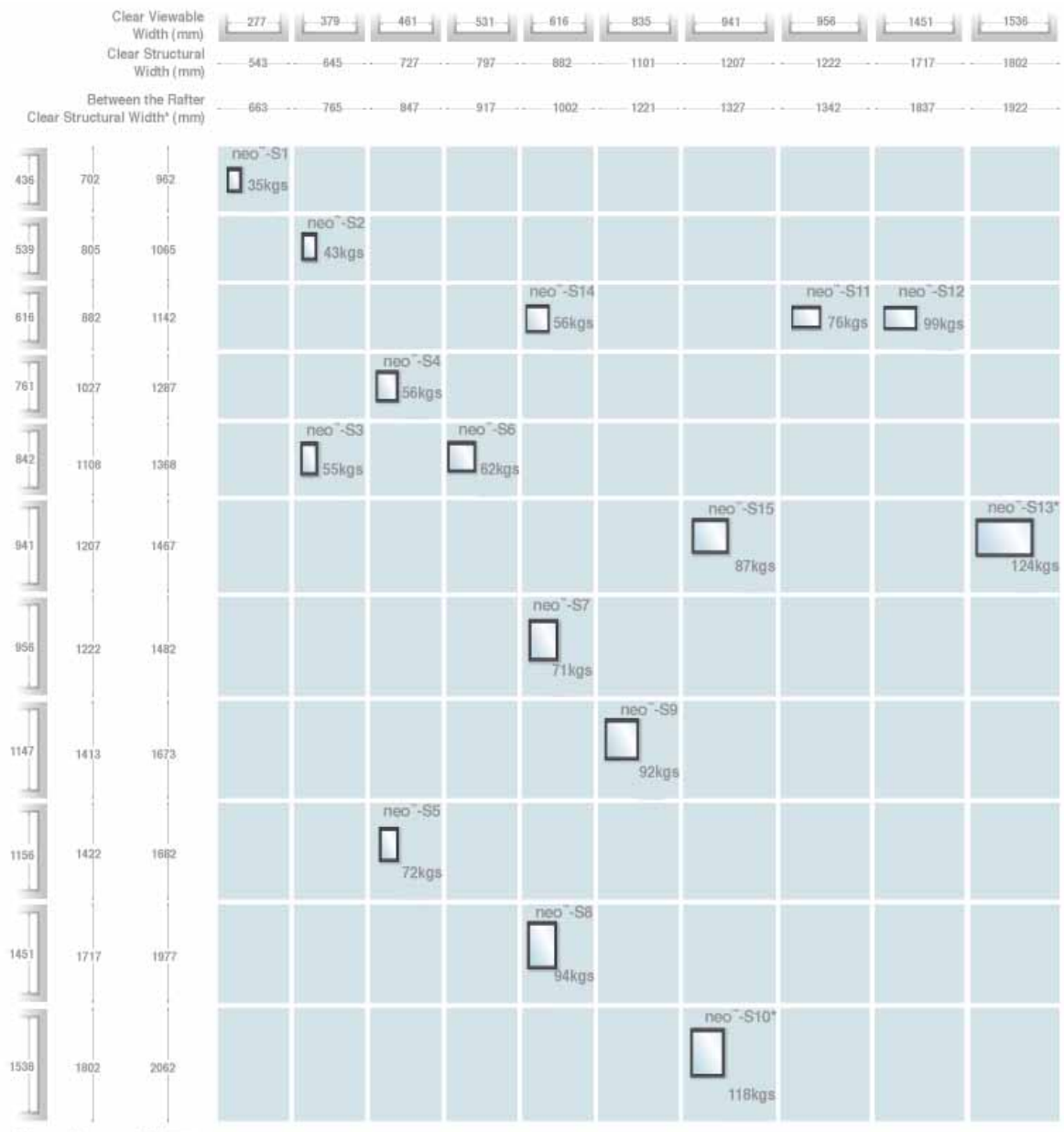


## The neo™ Steel Roof Window

There are fifteen standard sizes of the neo™ Steel roof window available in Revit format to download from our website. The neo™ Steel roof window is suitable for a pitched roof construction between 20° and 60°. The following guide provides useful tips for getting started.



## Size Chart



1. Download & save the **neo™** Steel roof window Revit family from our website:  
[www.therooflightcompany.co.uk/bim](http://www.therooflightcompany.co.uk/bim)

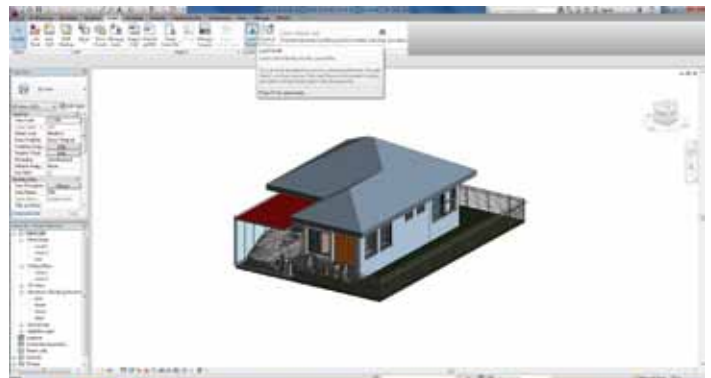
Ensure you have saved both of the following files.  
These contain all available standard sizes.

Window-Skylight-TheRooflightCompany-Neo-Edge-to-Edge\_Glazing\_Ultra-low\_Profile(Autodesk Revit Family)

Window-Skylight-TheRooflightCompany-Neo-Edge-to-Edge\_Glazing\_Ultra-low\_Profile (Text Document)



2. Open your Revit model >> Insert >> Load Family



3. Locate file *Window-Skylight-TheRooflightCompany-Neo-Edge-to-Edge\_Glazing\_Ultra-low\_Profile* >> Open

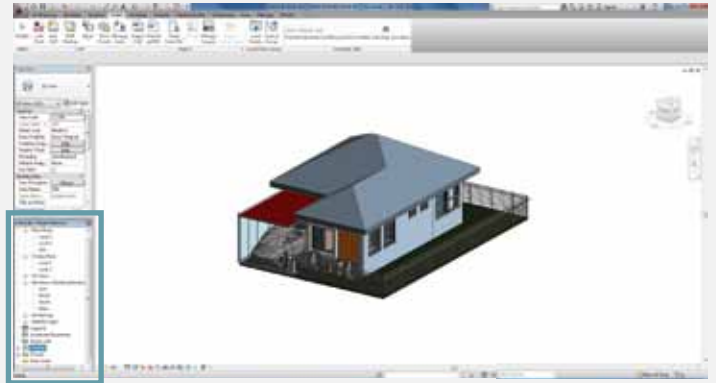


4. Specify Type Table >> Select Type/Types

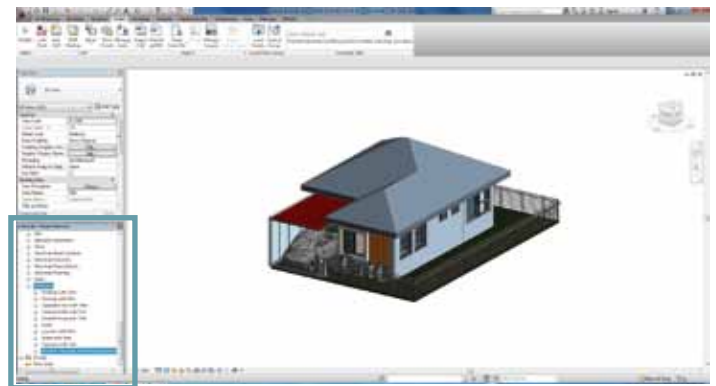
Reference the [Size Chart](#) on page 1 for model number.



4. Project browser >> Families

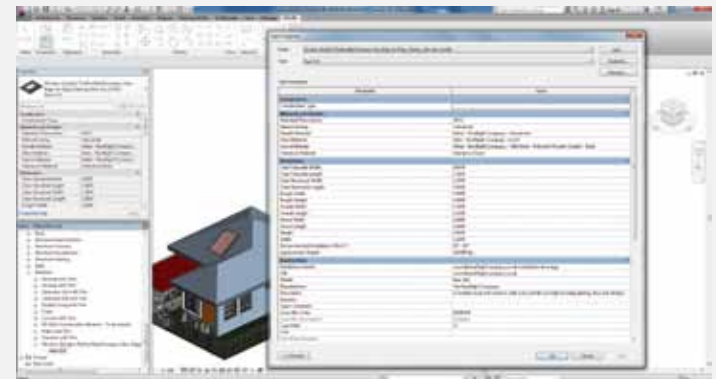


5. Families >> Windows >>  
Window-Skylight-TheRooflightCompany-Neo-Edge-  
to-Edge\_Glazing\_Ultra-low\_Profile >> Neo-model  
number

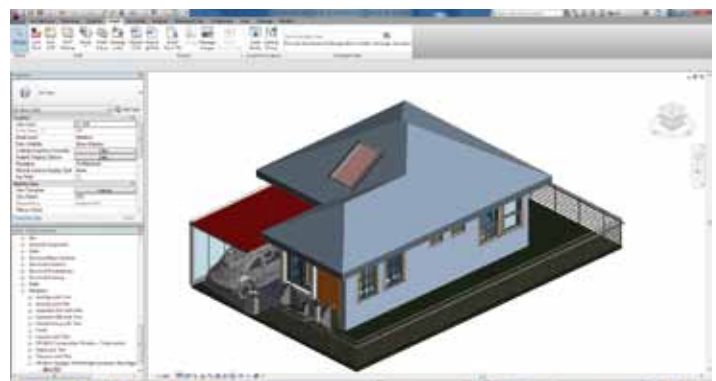


6. Neo-model number >> double click >> Type  
Properties

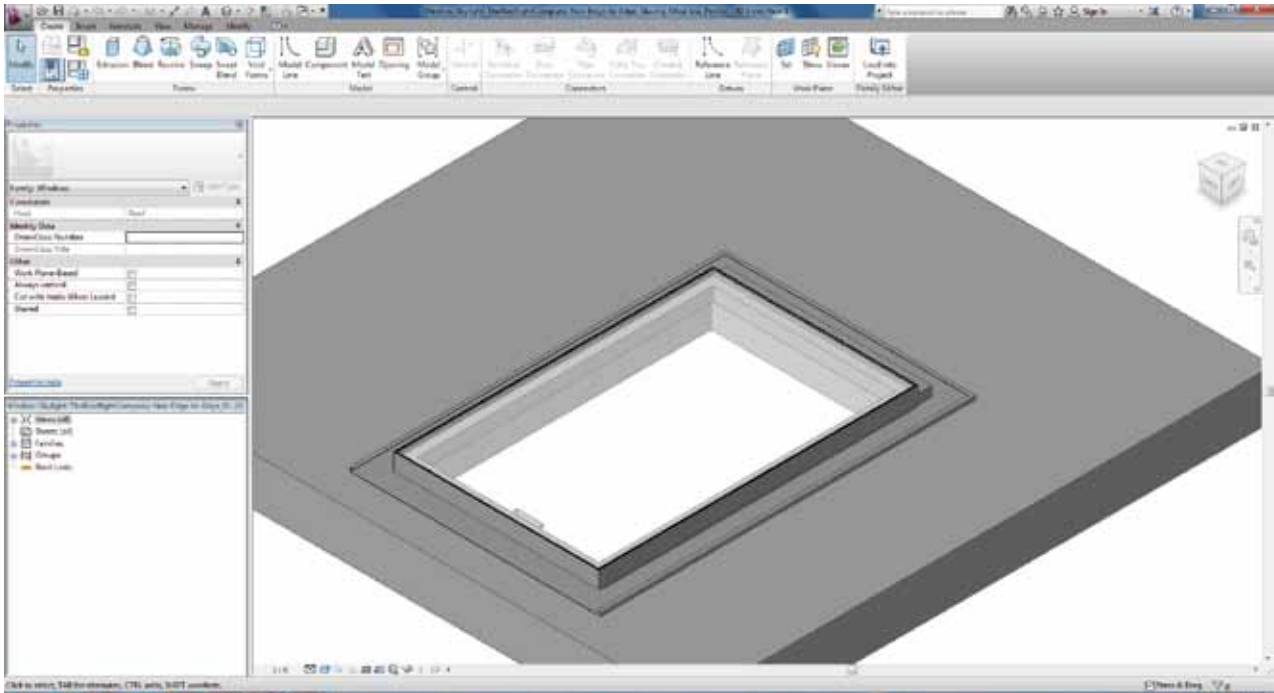
(The Type Properties table details the specification  
for the chosen neo™ Steel roof window)



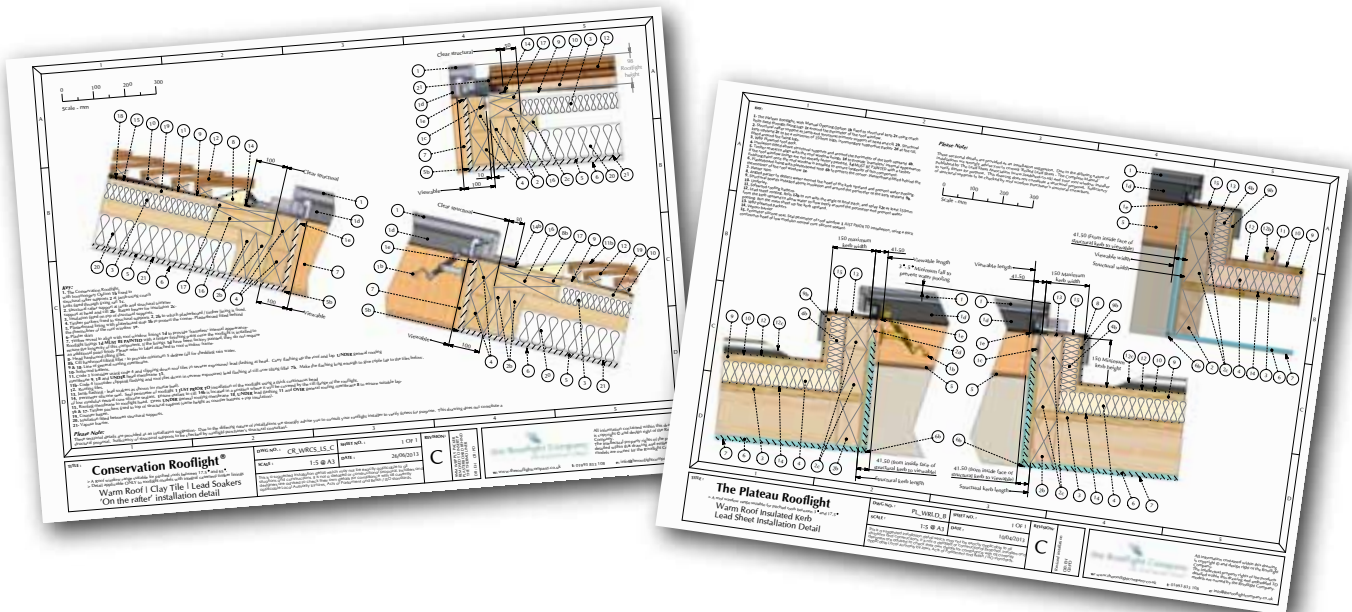
7. Position neo™ Steel roof window where you  
would like it to go.



8. By double clicking on the **neo™** Steel roof window the original model will open.



9. The latest installation drawings can be found on our website at :  
[www.therooflightcompany.co.uk/installation-drawings](http://www.therooflightcompany.co.uk/installation-drawings)



If you need any further information please [contact us](#).

Customer Service Department - 00 44 (0) 1993 833 155  
Email: [info@therooflightcompany.co.uk](mailto:info@therooflightcompany.co.uk)