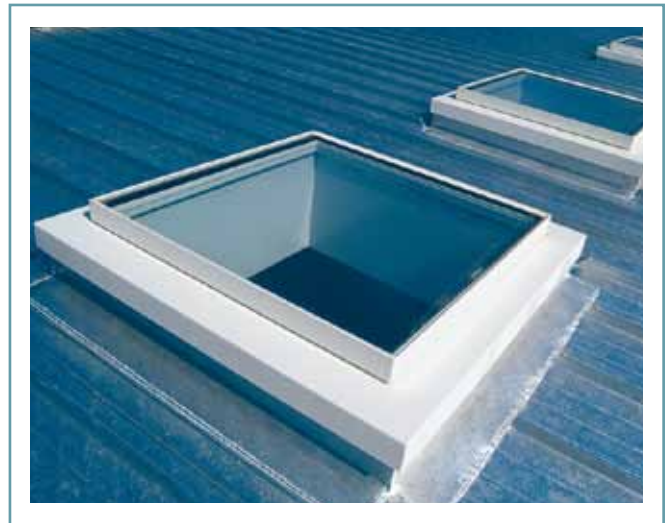


## The Plateau Rooflight

There are nine standard sizes of the Plateau Rooflight available in Revit format to download from our website. The Plateau Rooflight is suitable for a pitched roof construction between 3° and 20°. The following guide provides useful tips for getting started.



## Size Chart

Clear Viewable Width (mm)		542	842	1142	1442	1942
Internal Structural Kerb Width (mm)		625	925	1225	1525	2025
542	625	PL01	PL07	PL08		
842	925		PL02	PL09	PL10	
1142	1225			PL03	PL11	
1442	1525				PL04	Bespoke Option
Clear Viewable Length (mm)	Internal Structural Kerb Length (mm)					

1. Download & save the Plateau Rooflight Revit family from our website:

[www.therooflightcompany.co.uk/bim](http://www.therooflightcompany.co.uk/bim)

Ensure you have saved both of the following files.  
These contain all available standard sizes.

Window-Skylight-TheRooflightCompany-Plateau-Slim\_ProfileAutodesk Revit Family)

Window-Skylight-TheRooflightCompany-Plateau-Slim\_Profile (Text Document)



2. Open your Revit model >> Insert >> Load Family



3. Locate file Window-Skylight-TheRooflightCompany-Plateau-Slim\_Profile >> Open

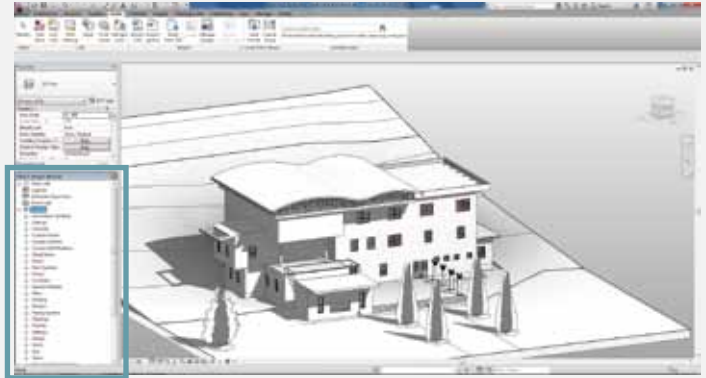


4. Specify Type Table >> Select Type/Types

Reference the [Size Chart](#) on page 1 for model number.



4. Project browser >> Families

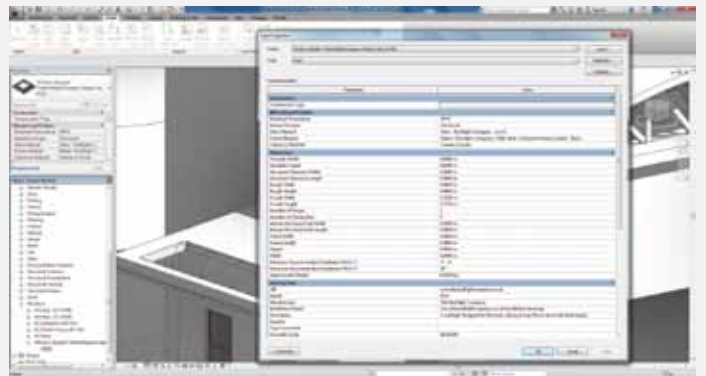


5. Families >> Windows >>  
Window-Skylight-TheRooflightCompany-Plateau-Slim\_Profile >> *Plateau-model number*

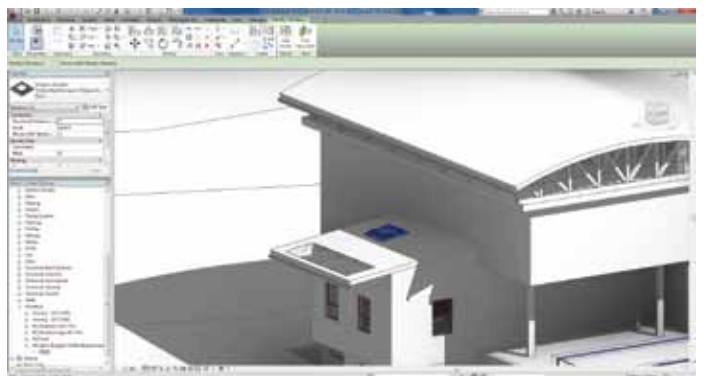


6. *Plateau-model number* >> double click >> Type Properties

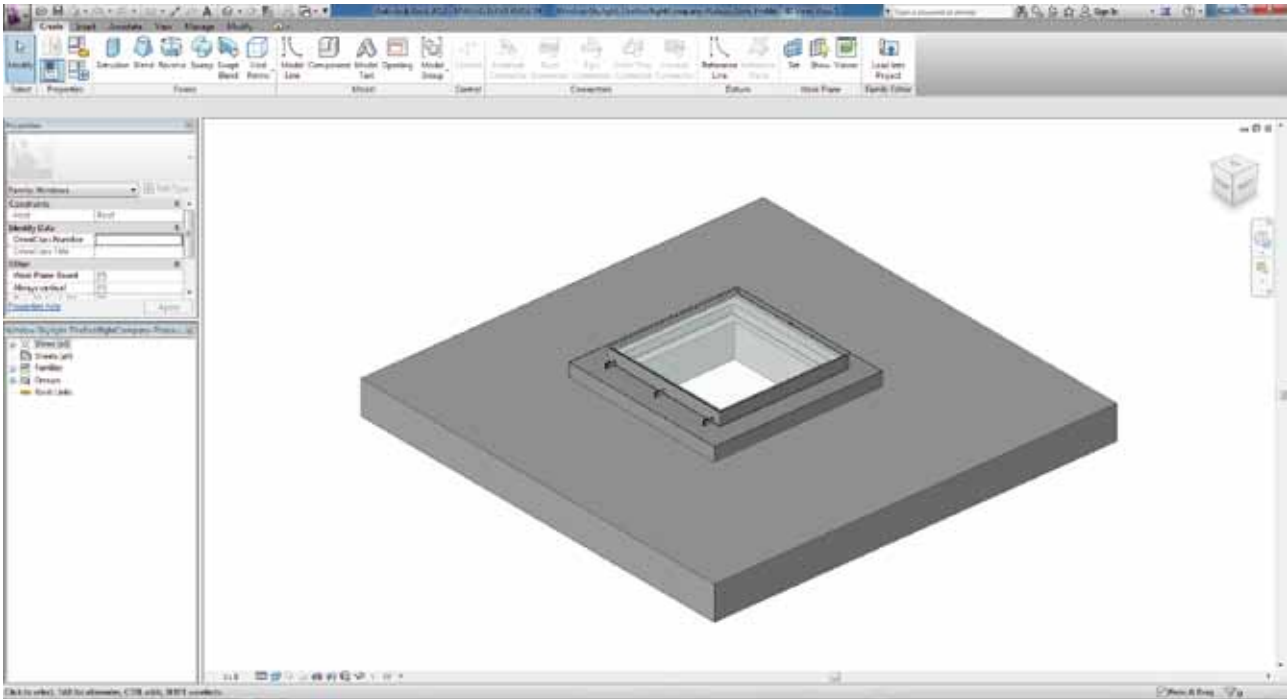
(The Type Properties table details the specification for the chosen Plateau Rooflight )



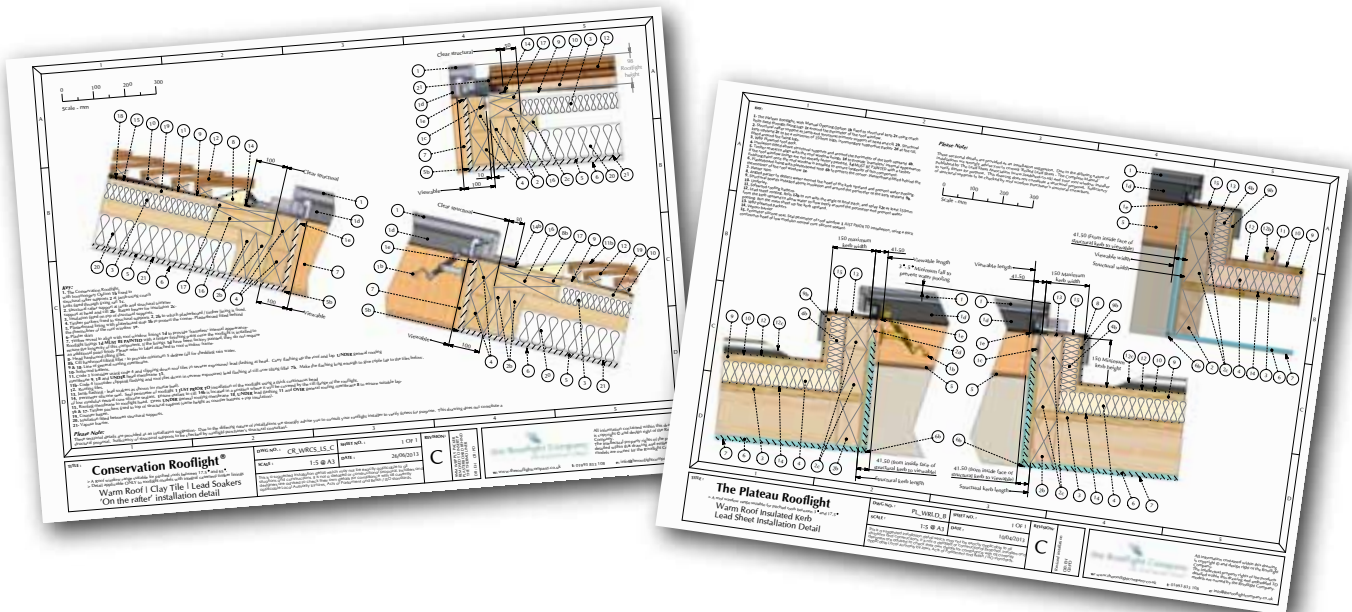
7. Position the Plateau Rooflight where you would like it to go.



8. By double clicking on the Plateau Rooflight the original model will open.



9. The latest installation drawings can be found on our website at :  
[www.therooflightcompany.co.uk/installation-drawings](http://www.therooflightcompany.co.uk/installation-drawings)



If you need any further information please [contact us](#).

Customer Service Department - 00 44 (0) 1993 833 155  
Email: [info@therooflightcompany.co.uk](mailto:info@therooflightcompany.co.uk)