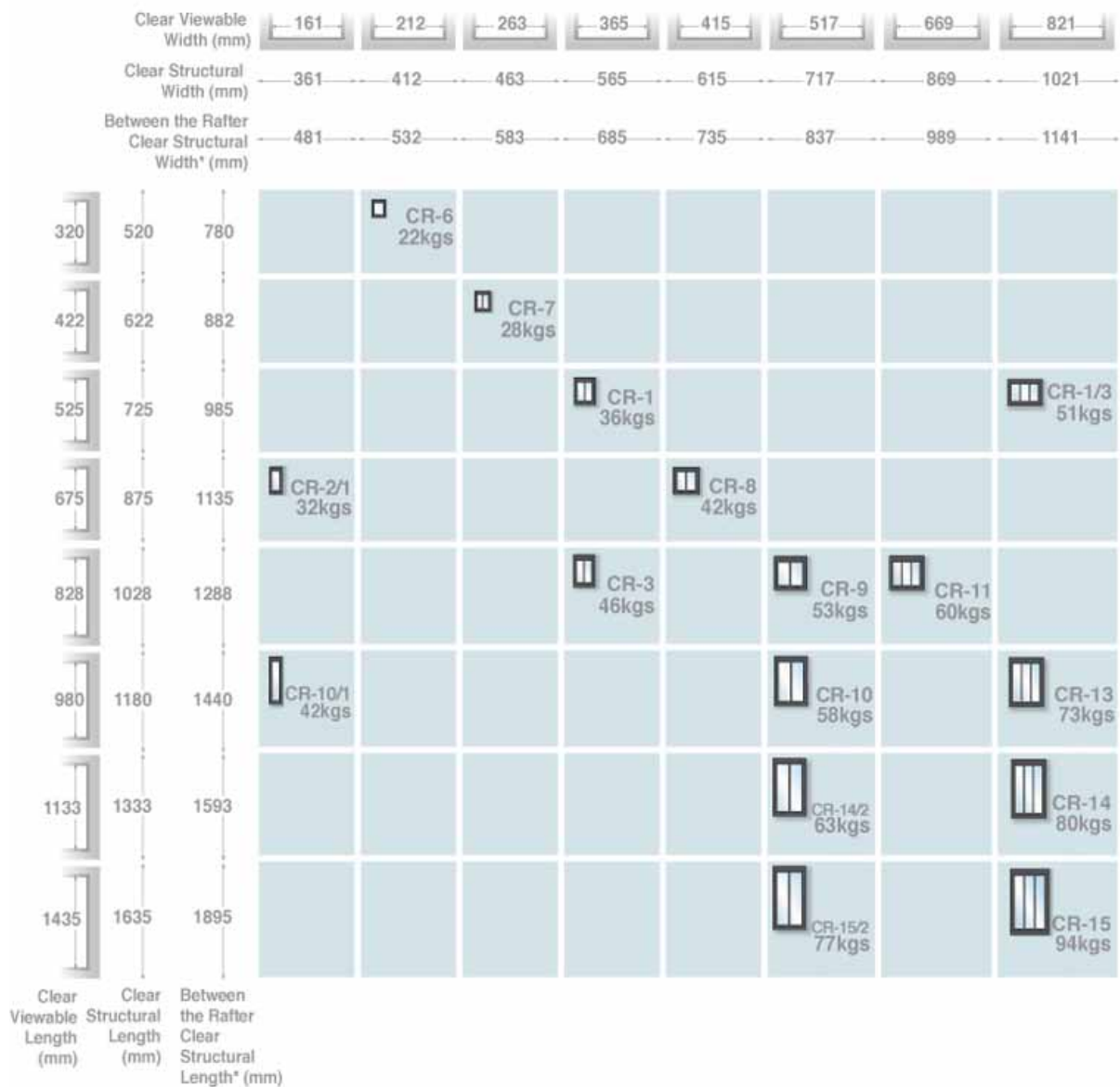


## The Conservation Rooflight®

There are sixteen standard sizes of the top-hinged Conservation Rooflight® available in Revit format to download from our website. The Conservation Rooflight® is suitable for a pitched roof construction between 17.5° and 65°. The following guide provides useful tips for getting started.



## Size Chart



1. Download & save the Conservation Rooflight® Revit family from our website:

[www.therooflightcompany.co.uk/bim](http://www.therooflightcompany.co.uk/bim)

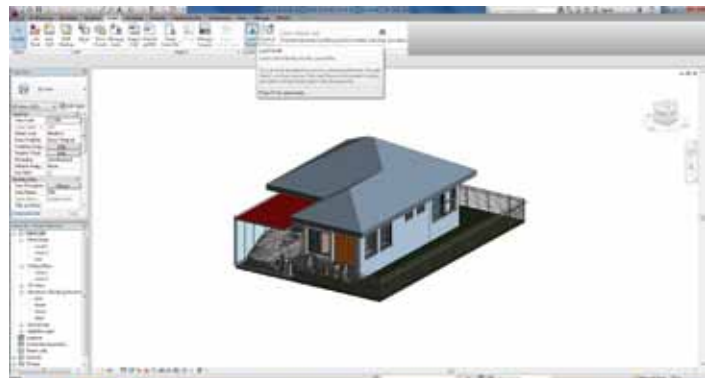
Ensure you have saved both of the following files. These contain all available standard sizes.

Window-Skylight-TheRooflightCompany-Conservation-Low-Profile (Autodesk Revit Family)

Window-Skylight-TheRooflightCompany-Conservation-Low-Profile (Text Document)



2. Open your Revit model >> Insert >> Load Family

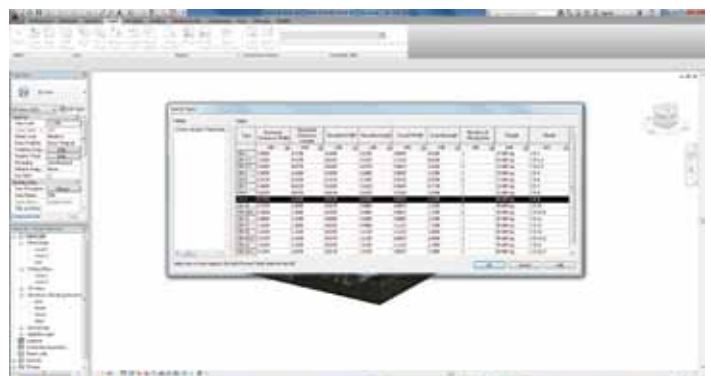


3. Locate file Window-Skylight-TheRooflightCompany-Conservation-Low-Profile >> Open

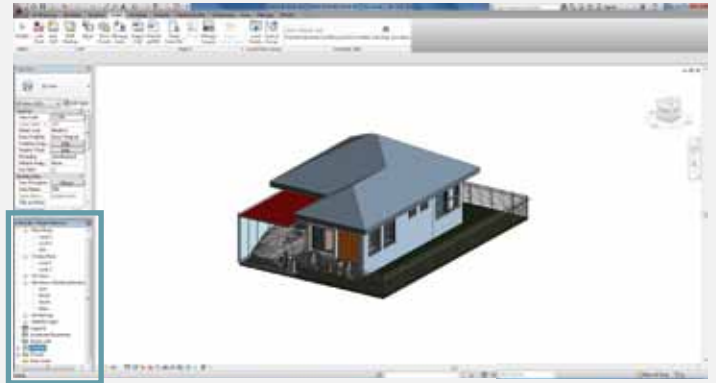


4. Specify Type Table >> Select Type/Types

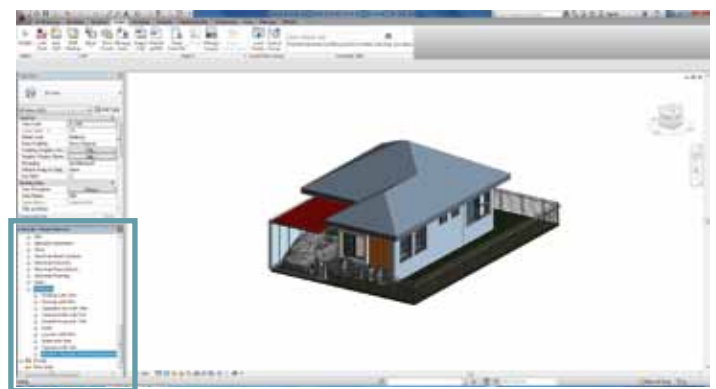
Reference the [Size Chart](#) on page 1 for model number.



4. Project browser >> Families

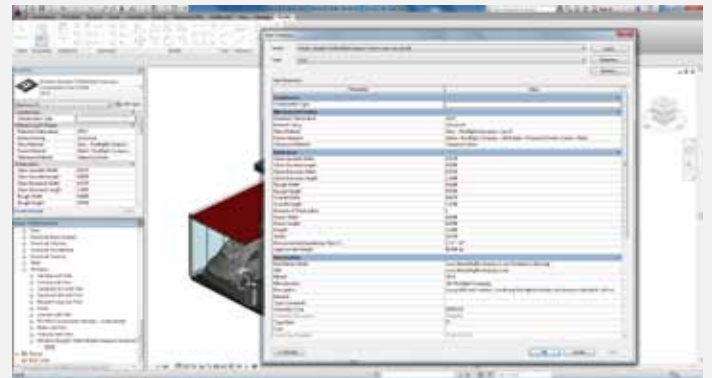


5. Families >> Windows >>  
Window-Skylight-TheRooflightCompany-  
Conservation-Low-Profile >> CR-model  
number

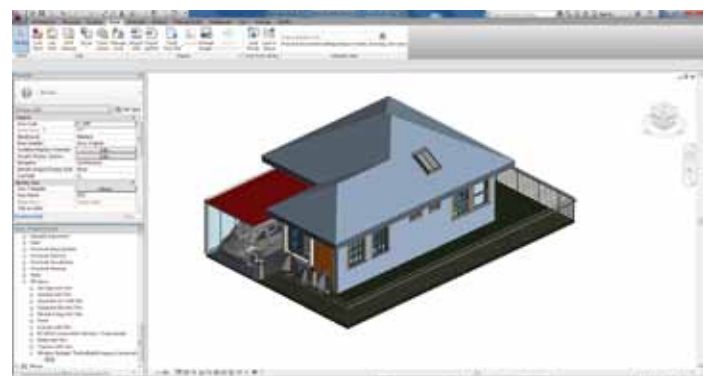


6. CR-model number >> double click >> Type  
Properties

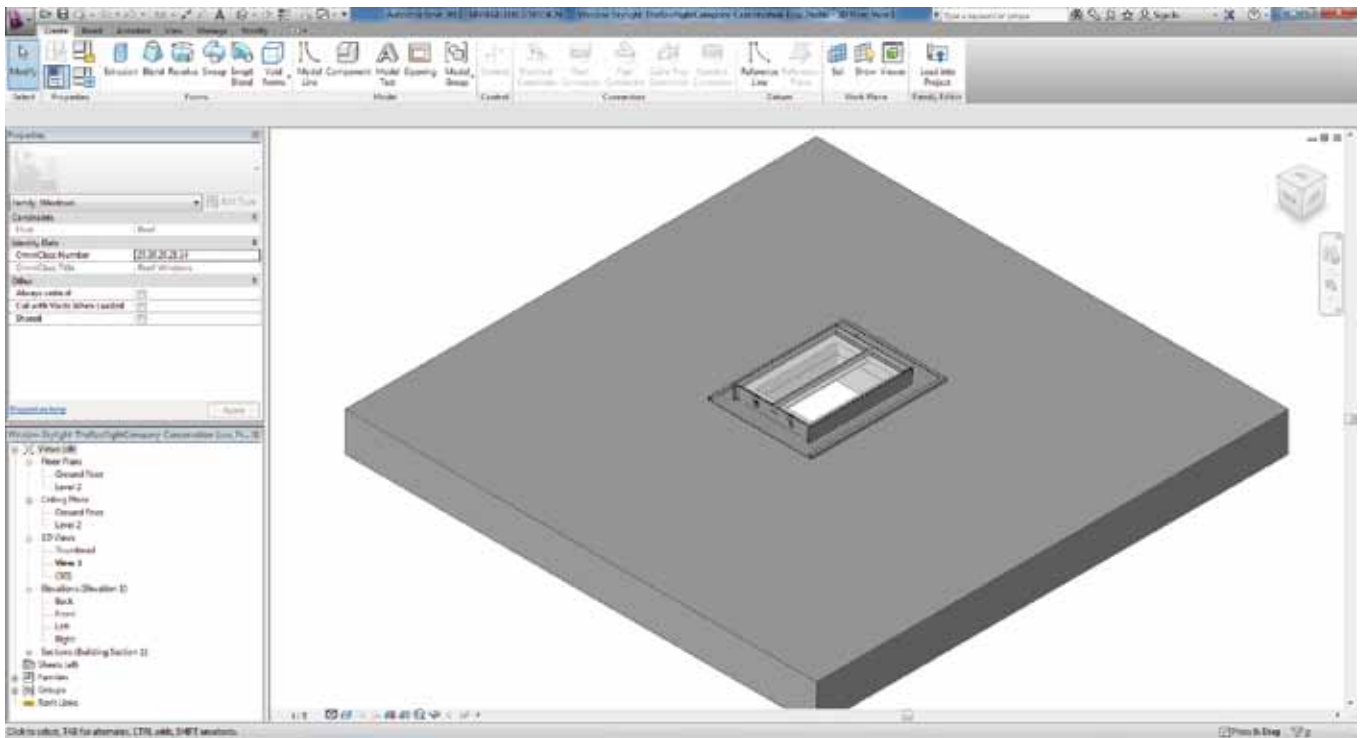
(The Type Properties table details the  
specification for the chosen Conservation  
Rooflight® )



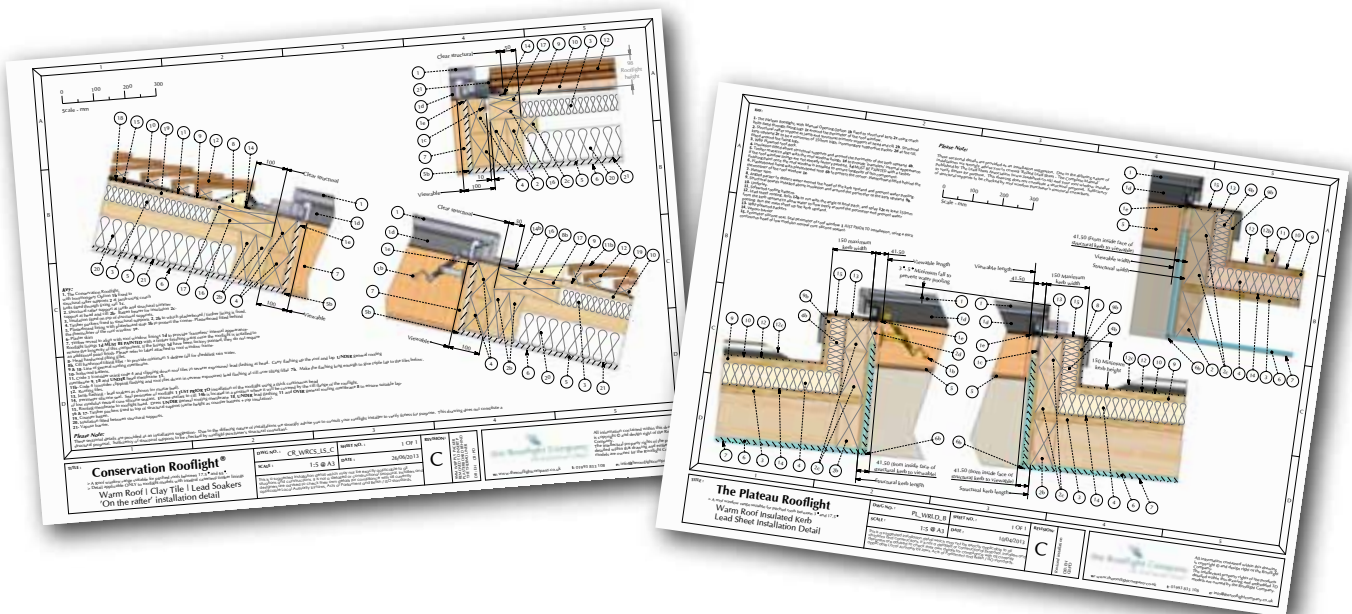
7. Position the Conservation Rooflight® where  
you would like it to go.



8. By double clicking on the Conservation Rooflight® the original model will open.



9. The latest installation drawings can be found on our website at :  
[www.therooflightcompany.co.uk/installation-drawings](http://www.therooflightcompany.co.uk/installation-drawings)



If you need any further information please [contact us](#).

Customer Service Department - 00 44 (0) 1993 833 155  
Email: [info@therooflightcompany.co.uk](mailto:info@therooflightcompany.co.uk)